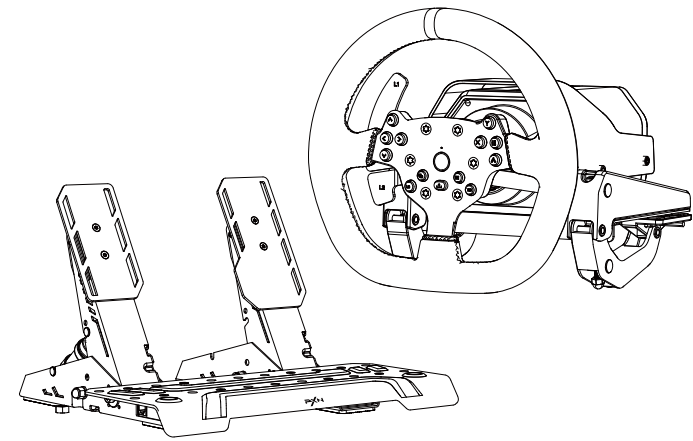




V10 Ultra



## DIRECT DRIVE RACING WHEEL

### — User Manual —

EN

Thank you for choosing and supporting PXN. Please read this manual carefully before starting to enjoy your gaming experience.

#### ⚠ Warning — Safety

- \* When connecting, installing, and removing this product, apply appropriate force. Do not twist or pull the cables.
- \* Avoid splashing any liquids onto the product or its ports.
- \* Keep this product in a dry place. Do not expose it to fire, or environments with high humidity, temperature, or smoke.
- \* Please use the power cord provided with the base and do not use any other power cord.
- \* Do not use the power cord if the cable or its connector is damaged, cracked, or broken.
- \* Make sure the power cord is properly plugged into the electrical outlet and connected to the connector on the back of the base.
- \* Do not disassemble, modify, or attempt repairs on your own. Any maintenance must be performed by the manufacturer, their authorized representative, or qualified technicians.
- \* Only use accessories/components specified by the manufacturer.
- \* If this product exhibits any unusual noises, heat, or odors, please cease use immediately.
- \* If the product is not to be used for a long time, please disconnect the power cord from the power socket. The power socket must be located near the device and must be easily accessible.

#### Ventilation

Make sure that none of the ventilation holes on the base are blocked. For optimal ventilation, ensure the following:

- \* Keep the base at least 10cm away from any wall.
- \* Do not place the base in any confined space.
- \* Do not place any covering on top of the base.
- \* Please avoid dust accumulation in the ventilation holes.

#### Temperature

- \* When the temperature exceed 60°C due to ventilation, environment, or usage, the base motor will automatically reduce the output power.
- \* When the temperature exceed 70°C due to ventilation, environment, or usage, the base motor will automatically shut down.
- \* Do not touch any part of the motor when the output power of the base motor is reduced or power OFF due to high temperature.

#### ⚠ Warning — Potential for Injury from Force Feedback and Repetitive Actions

To avoid possible injuries caused by force feedback and repetitive actions, please refer to the usage suggestions:

- \* Avoid playing games for too long.
- \* Rest for 10 to 15 minutes after every hour of using this product.
- \* If you feel any fatigue or pain in your hands, wrists, arms, legs, or feet, stop playing and rest for a few hours before resuming the game.
- \* If symptoms or pain persist after resuming gaming, stop gaming and consult a physician.
- \* Keep out of reach of children.
- \* Make sure the racing wheel base is secured as per the instructions in this manual.

This product is intended for use by individuals aged 16 and older.

#### ⚠ Heavy Item

Be careful not to drop the product on yourself or anyone else!

01 - English

#### Automatic Calibration

After the power adapter is connected to the product and powered on, self-calibration can be performed automatically. During the self-calibration process, the motor will perform a self-test by rotating left and right and then stop in the center position.

#### ⚠ Warning

To avoid possible incorrect calibration or personal injury, do not touch the product during the self-calibration process.

If the product appears to be operating improperly or is improperly calibrated: Turn off the console/ PC and completely disconnect the power supply of this product. Then reconnect the power cord and other accessories, restart the console or PC, and then re-enter the game.

For safety reasons, never use the pedal set barefoot or with only socks on your feet. PXN® is not responsible for injuries caused by using the pedals without shoes.

#### ⚠ Warning — Pedal Clamping Hazard While Playing Games

- \* Keep the pedal set out of the reach of children.
- \* Never place your fingers on or anywhere near the sides of the pedals during play.
- \* Never place your fingers on or anywhere near the rear base of the pedals during play.
- \* Never place your fingers on or anywhere near the front base of the pedals during play.



NEVER



NEVER



NEVER

#### Automatic Pedal Calibration

The pedals are automatically calibrated by pressing the pedal to its maximum travel after a successful connection.

#### 01 System Requirements

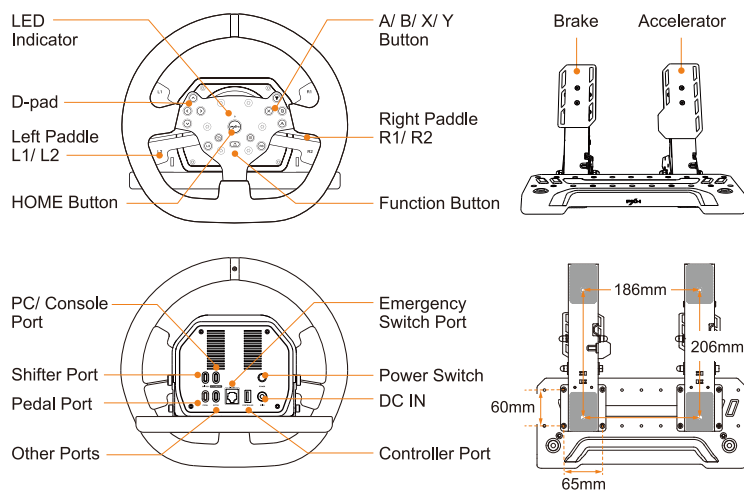
Supported Platforms: PC, PS4, X-ONE, X-SERIES X|S

PC System Requirements: Windows 7/ 8/ 10/ 11

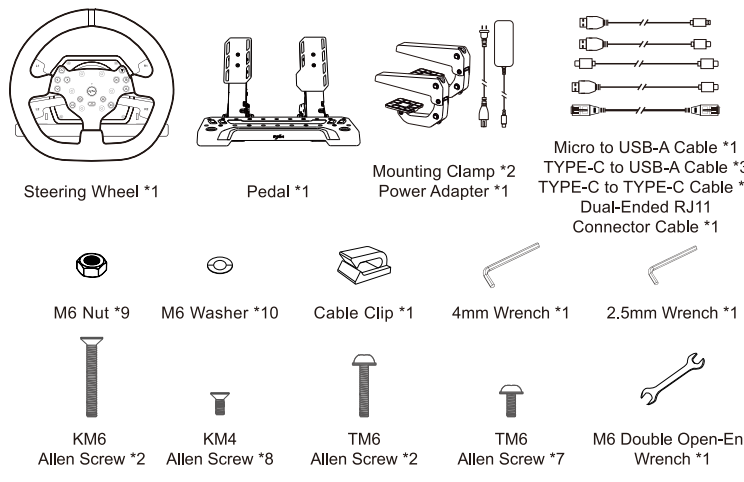
Note: Require the original controller for guidance on PS4 and X-ONE/ X-SERIES X|S platforms.

02 - English

#### 02 Product Overview



#### 03 Product List

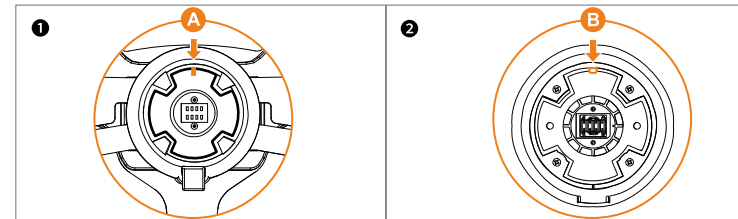


03 - English

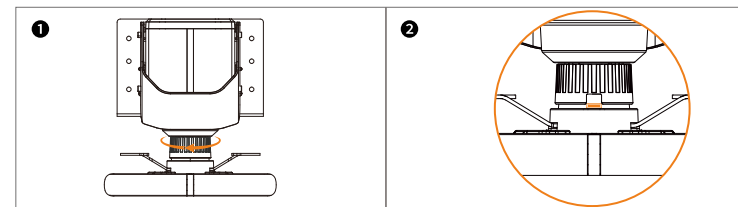
#### 04 Installation method

##### • Steering Wheel Installation

Step 1 Align the steering wheel convex groove A with the base groove B and push it in.

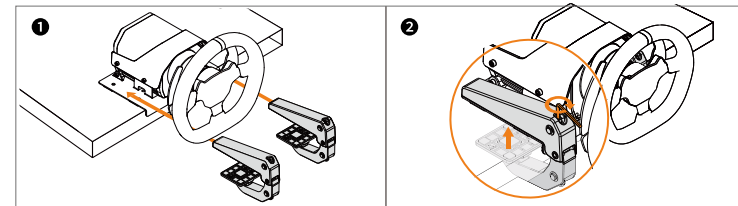


Step 2 Hold the steering wheel, rotate the base locking ring to the limit point, and push in the catch to lock.



##### • Base Fixation

- Step 1 Place the wheel base on a suitable position on the table or stand.
- Step 2 Take out the clamp and place it on the plate.
- Step 3 Use wrench to install and secure it.



##### • Pedal Installation Method

- Step 1 Connect the throttle module to the connector on the brake module using the RJ11 cable.
- Step 2 Install the throttle module and brake module to the footrest.
- Step 3 Use TYPE-C to TYPE-C cable to connect to the steering wheel to use.

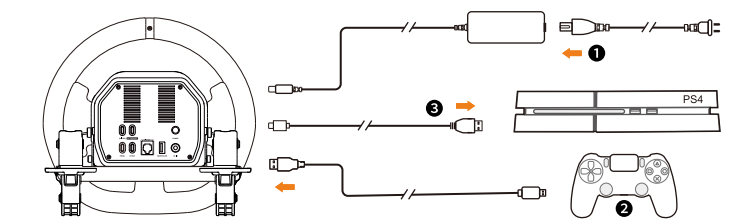
04 - English

#### 05 Use on PC

- Step 1 Connect the pedals and other accessories to the corresponding ports on the back of the wheel base.
- Step 2 Install the base securely and connect it to the power adapter.
- Step 3 Use the TYPE-C data cable to connect the base to the PC.
- Step 4 After the connection is successful, the base will perform a self-check and reset, and the default indicator will stay on.

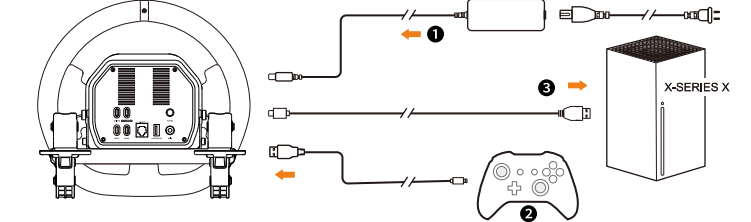
#### 06 Use on PS4

- Step 1 Connect the shifter and pedal to the corresponding ports on the base.
- Step 2 Install the base securely and connect it to the power adapter.
- Step 3 After the original PS4 controller is turned off, use a Micro USB data cable to connect the original PS4 controller to the controller guide port on the base.
- Step 4 Use a TYPE-C data cable to connect the wheel base to the PS4 console and turn on the PS4.
- Step 5 Press the HOME button on the steering wheel. Once the connection is successful, the base will perform a self-check, return to the center position and the default indicator will stay on.



#### 07 Use on X-ONE/ X-SERIES X|S

- Step 1 Connect the shifter and pedal to the corresponding ports on the base.
- Step 2 Install the base securely and connect it to the power adapter.
- Step 3 After the X-ONE/ X-SERIES X|S original controller is turned off, use a Micro USB or TYPE-C cable to connect the X-ONE/ X-SERIES X|S original controller to the controller guide port on the base.
- Step 4 Use a TYPE-C cable to connect the wheel base to the X-ONE/ X-SERIES X|S console, and turn on the X-ONE/ X-SERIES X|S.
- Step 5 Press the HOME button on the steering wheel. After the connection is successful, the base will perform a self-check and return to the center position. The default indicator will stay on.



05 - English

#### 08 App Functions

Install the "PXN NEXUS" app on your phone, then enable BT and grant the required location permissions. You don't need to pair the device with your phone; just open the app to explore its features. Download for iOS: Search for "PXN NEXUS" in the APP Store. Download for Android: Search for "PXN NEXUS" in the Google Play.

Function Instruction:

- Effective rotation degree setting
- Force feedback value adjustment
- Function testing
- Firmware update



Scan code to download APP

#### 09 Product Specifications

Model	V10 Ultra
Connection Method	USB Wired Connection
Operating Voltage	DC24V, 5V (USB)
Operating Current	2A, ≤500mA (USB)
Packaging Dimensions	About 442 * 419 * 272 mm
Product Dimensions	About 270 * 280 * 249 mm (Steering Wheel) About 350 * 342 * 224 mm (Pedal)
Product Weight	About 3500 g (Steering Wheel) About 2943 g (Pedal)
Operating Temperature	10~40°C
Operating Humidity	20~80%

#### ⚠ Warning

- Please read the user manual carefully before operation.
- Avoid strong vibration and dropping from heights.
- Do not disassemble, modify, or repair on your own.
- Prevent water or other liquids from entering the product to avoid damage.
- Avoid storing in damp, high-temperature, or oily environments.
- Use appropriate force when connecting and removing devices.
- Children should use this product under adult supervision.

06 - English