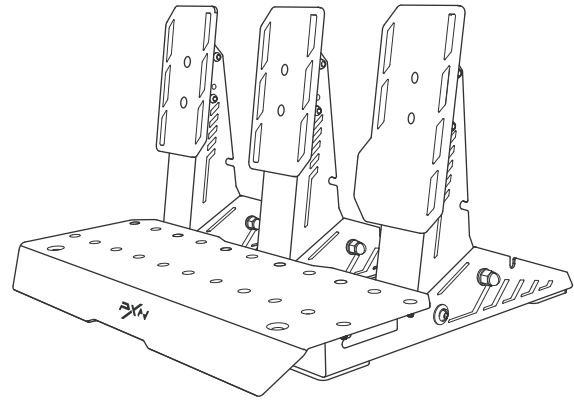




PD HM



RACING PEDAL

USER MANUAL

Please read the manual carefully before using the product, and keep this manual for future reference.

Warning — Safety

- \* Please connect, install and remove this product with proper force, don't twist or pull the connectors and cables.
- \* Avoid getting water or other liquids on product or its connectors.
- \* Please don't disassemble, refit or repair on your own. Any repairs must be carried out by the manufacturer, its authorized representatives or qualified technicians.
- \* Please use the attached system/accessories specified by manufacturer only.

Warning — Pedal set pinch hazard when playing

- \* Keep the pedal set out of children's reach.
- \* During gameplay, never place your fingers on or anywhere near the sides of the pedals.
- \* During gameplay, never place your fingers on or anywhere near the pedal's rear base.
- \* During gameplay, never place your fingers on or anywhere near the pedal's front base.



NEVER



NEVER



NEVER

Automatic Calibration of the Pedals

After connecting successfully, the pedals will automatically calibrate when you press each pedal to its maximum travel distance.

Warning

Never press the pedals during the racing wheel's self-calibration or while a game is loading.

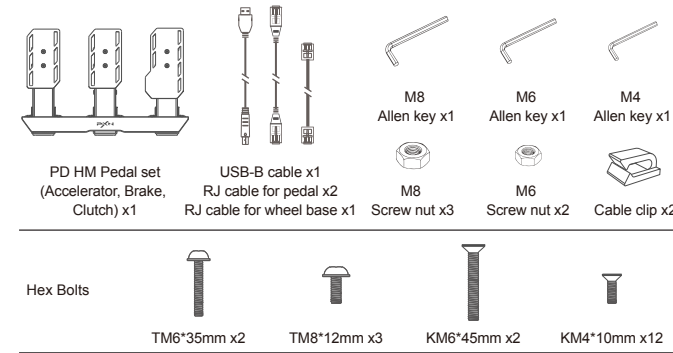
For safety reasons, never use the pedal set with bare feet or while wearing only socks on your feet. PXN® is not responsible for injuries caused by using pedals without shoes on.

The product can only be operated by users aged 16 or above.

System Requirement

Supported racing wheel: PXN-V10, V12 DDL, V12 DDS  
Supported platform: PC  
System requirement on PC: Windows 7 / 8 / 10 / 11

Package Content

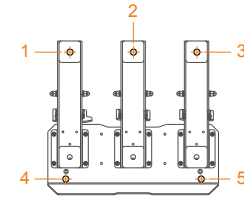


Installation

Clamp the Pedals

The pedal can be installed on a bracket or a racing seat.

- Step 1 Align the screw holes at the bottom of the pedal with the installation holes.
- Step 2 Secure the pedal with screws and nuts.
- Step 3 Tighten the screws and nuts with an Allen key and a wrench.

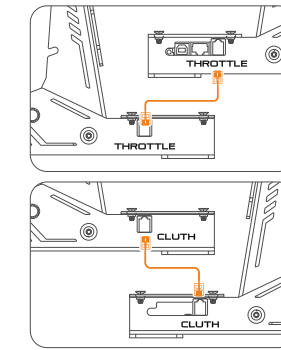


Pedal Assembly

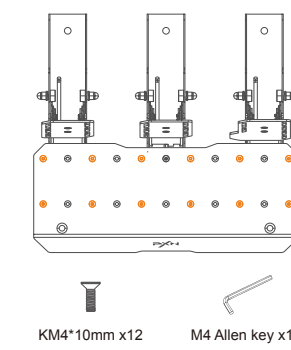
The pedal can be attached to a bracket or a racing seat.

- Step 1 Take out the pedal set and pedal board.
- Step 2 Connect the clutch and accelerator to the brake pedasl using a RJ cable.
- Step 3 Fasten three pedal sets on the pedal board using included KM4\*10mm Hex bolts and M4 Allen key.

Pedal Assembly STEP 1:

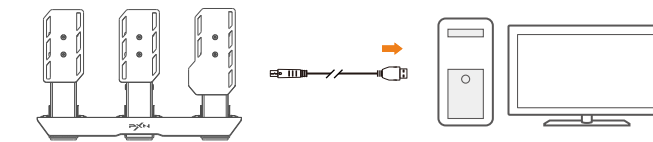


Pedal Assembly STEP 2:



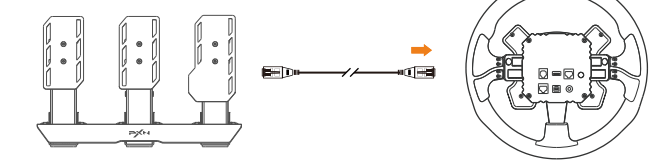
Connect with PC

- Step 1 Secure the pedal in the appropriate position.
- Step 2 Connect the pedal to the PC using a USB-B cable.
- Step 3 After successful connection, press each pedal to its maximum travel distance for calibration before use.



Connect with PXN Wheel Base

- Step 1 Secure the pedal in the appropriate position.
- Step 2 Connect the pedal to the PXN Wheel Base using a RJ cable.
- Step 3 After successful connection, press each pedal to its maximum travel distance for calibration before use.



Advanced Pedal Settings

Download APP on iOS: Search for [ PXN Wheel ] in the App Store.  
Download for Android: Search [ PXN Play ] in Google Play.  
Connect the pedals with PXN Wheel Base and download the [ PXN Wheel ] APP on the mobile phone to explore advanced pedal settings.

The main functions of the APP are:

- Real-time data viewing of the pedal
- Pedal linearity adjustment
- More functions are under development

Attentions

- Avoid strong vibration, do not disassemble, modify or repair by yourself.
- Prevent water or other liquids from entering the product to avoid damage.
- Avoid storing in humid, high temperature, oily smoke and other places.
- Please do not throw the product into fire to avoid explosion.
- Children should be under adult's supervision at all times when using this product.
- If you have any problems or suggestions about the product, please contact the seller or the after-services.

Product Specifications

Model	PD HM
Connection Method	Wireless Connection
Working Power	Working Power of USB: 5V
Working Current	Working Current of USB: 85 mA
Package Size	About 520 * 375 * 136 mm
Product Size	About 350 * 315 * 225 mm
Product Weight	About 3890 g
Use Temperature	10-40 °C
Use Humidity	20~80 %