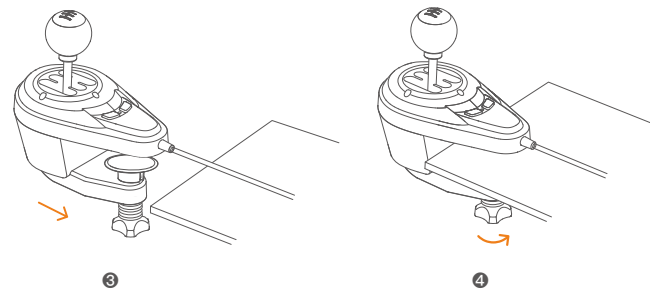
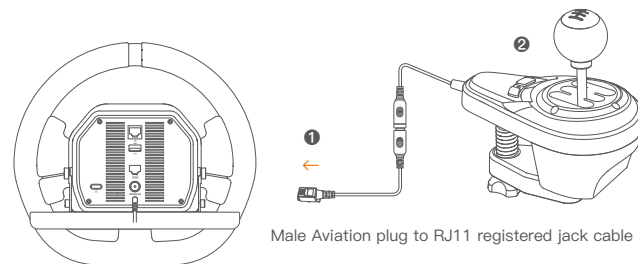


## USER MANUAL

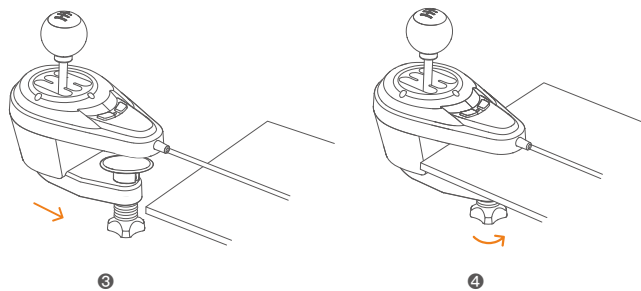
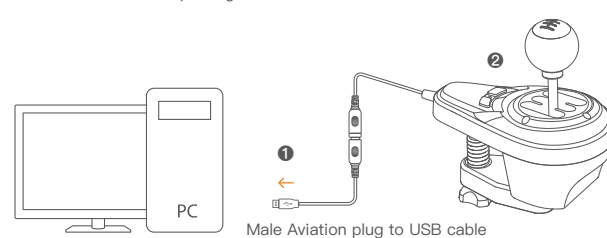
### For PXN Racing Wheels

- ❶ Plug the Shifter into PXN racing wheel with male aviation plug to RJ11 registered jack cable.
- ❷ The Shifter red indicator will remain ON when connection is successful, and the shifter can be used now.
- ❸ Place the shifter horizontally in an appropriate position.
- ❹ Rotate the screw cap to tighten the Shifter.



### For PC

- ❶ Plug the Shifter into PC USB port with male aviation plug to USB cable.
- ❷ The Shifter red indicator will remain ON when connection is successful, and the shifter can be used now.
- \* In the games of D-input category, the games will recognize both steering wheel and shifter separately. The shifter can be used by setting it in the games.
- ❸ Place the shifter horizontally in an appropriate position.
- ❹ Rotate the screw cap to tighten the Shifter.



### Product Accessories

- Male Aviation plug to USB cable\*1
- Male Aviation plug to RJ11 registered jack cable\*1
- Male Aviation plug to PS2 male cable\*1

### Supported Platforms

- Support Windows 7/8/10/11
- PXN Racing Wheels : PXN-V9/V10

### Product Specifications

- Product Model       PXN-A7
- Connect Type       Wired
- Working Voltage     5V
- Working Current     25mA
- Product Weight     About 577g
- Use Temperature    0-40°C
- Use Humidity        20-80%

### Attention

- Avoid strong vibration, do not disassemble, modify or repair by yourself.
- Prevent water or other liquids from entering the product to avoid damage.
- Avoid storing in humid, high temperature, oily smoke and other places.
- Please do not throw the product into fire to avoid explosion.
- Children should be under adult's supervision at all times when using this product.
- If you have any problems or suggestions about the product, please contact the seller or the after-services.