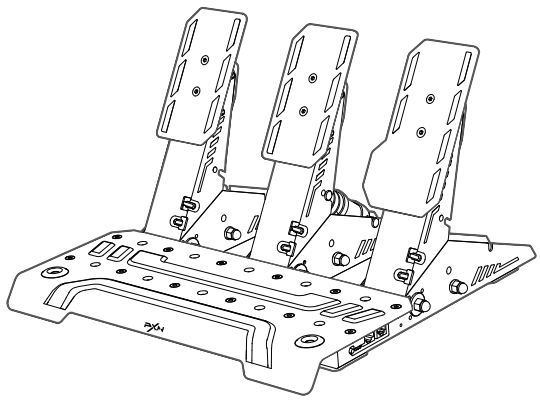




PD HM Gen2



RACING PEDAL

– User Manual –

EN

Thank you for choosing and supporting PXN, please read this manual carefully before starting to enjoy your gaming experience.

Warning — Safety

- * When connecting, installing, and removing this product, apply appropriate force. Do not twist or pull the ports and cables.
- * Avoid splashing any liquids onto the product or its ports.
- * Do not disassemble, refit, or attempt repairs on your own. Any maintenance must be performed by the manufacturer, their authorized representative, or qualified technicians.
- * Only use accessories/ components specified by the manufacturer.

For safety reasons, please do not use the pedal set barefoot or with only socks on your feet. PXN® assumes no responsibility for injuries caused by the use of the pedals in the event of improper use.

This product is intended for use by users aged 16 and older.

Warning — Pedal set pinch hazard when playing games

- * Keep the pedal set out of the reach of children.
- * Do not place your fingers on or anywhere near the sides of the pedals during gameplay.
- * Do not place your fingers on or anywhere near the rear base of the pedal during gameplay.
- * Do not place your fingers on or anywhere near the front base of the pedal during gameplay.



Never



Never



Never

Automatic Calibration of the Pedals

After successful connection, the pedals will automatically calibrate when you press the pedal to its maximum travel.

Warning

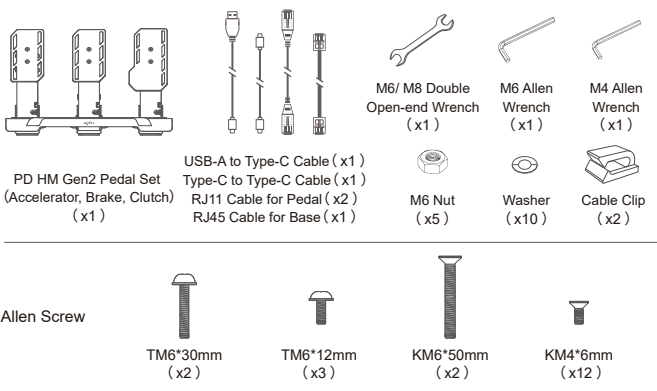
Do not press the pedals during the racing wheel's self-calibration or while a game is loading.

01 Supported Platforms

Supported Platforms: PC
PC System Requirement: Windows 7/ 8/ 10/ 11
Compatible Base: PXN Bases

01 - English

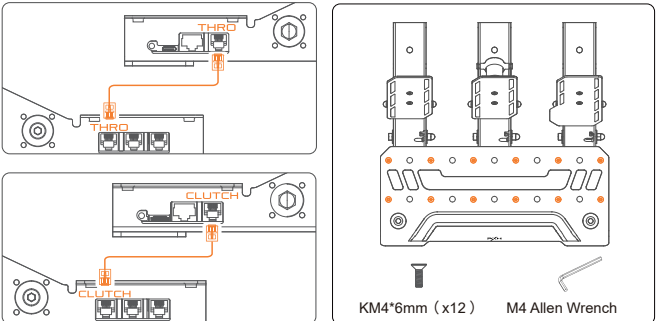
02 Product Content



03 Installation

• Pedal Assembly

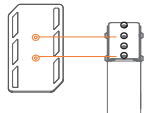
- Step 1 Take out the pedal set and footboard.
- Step 2 Connect the clutch and accelerator to the brake pedals with a RJ cable.
- Step 3 Use M4 allen wrench and KM4*6mm screws to fix the three pedal sets on the pedal board.



02 - English

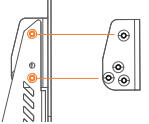
• Pedal's Panel Height Adjustment

- Step 1 Use M4 Allen Wrench to remove the two screws from the foot panel.
- Step 2 There are two adjustable positions; adjust the panel height as needed and then tighten the screws.



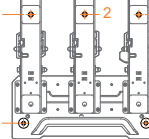
• Pedal's Panel Angle Adjustment

- Step 1 Use M4 Allen Wrench to remove the screws on the lower part of the module side and loosen the screws on the upper part.
- Step 2 There are three adjustable positions, adjust the panel angle as needed and then tighten the screws.



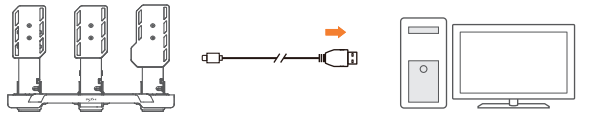
• Stand Fixing

- The pedal can be mounted on the stand or on a racing seat.
- Step 1 Place the pedal and align the bottom screw holes with the mounting holes.
 - Step 2 Secure the pedal with screws and nuts.
 - Step 3 Use the wrench to tighten the screws and nuts.



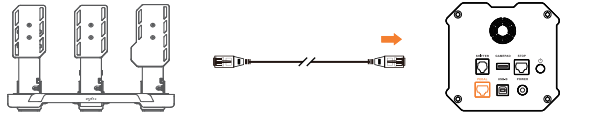
04 Connection with PC

- Step 1 Fix the pedal in a proper position.
- Step 2 Connect the pedal to the PC with the USB-A to Type-C cable.
- Step 3 After successful connection, press each pedal to its maximum travel to calibrate.



05 Connection with PXN Wheel Base

- Step 1 Fix the pedal in a proper position.
- Step 2 Connect the pedal to the PXN wheel base with the RJ45 data cable (or Type-C to Type-C cable).
- Step 3 After successful connection, press each pedal to its maximum travel to calibrate.



03 - English

06 PC Software Function

Download the [PXN SimRacing] on your computer:
<https://www.e-pxn.com/news>

- Main Function:
- Real-time data viewing of the pedal
 - Pedal linearity adjustment



Scan the QR code to view more

07 Product Specifications

Model	PD HM Gen2
Connection Method	Wired Connection
USB Operating Voltage	5V
USB Operating Current	85 mA
Packaging Dimensions	About 520 * 375 * 122 mm
Product Dimensions	About 350 * 342 * 222 mm
Product Weight	About 4350 g
Operating Temperature	10 ~ 40°C
Operating Humidity	20 ~ 80%

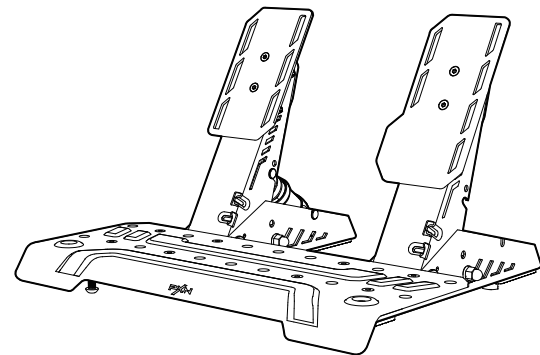
⚠ Warning

- Avoid strong vibration, do not disassemble, modify or repair by yourself.
- Prevent water or other liquids from entering the product to avoid damage.
- Avoid storing in damp, high-temperature, or smoky environment.
- Built-in battery, please do not throw the product into fire to avoid explosion.
- Children should use this product under adult supervision.
- If you have any problems or suggestions about the product, please contact the seller or the after-services team.

04 - English



PD HM Brake & Throttle



RACING PEDAL

– User Manual –

EN

Thank you for choosing and supporting PXN. Please read this manual carefully before starting to enjoy your gaming experience.

⚠ WARNING — Safety

- * When connecting, installing, and removing this product, apply appropriate force. Do not twist or pull the connectors.
- * Avoid splashing any liquids onto the product or its ports.
- * Do not disassemble, modify, or attempt repairs on your own. Any maintenance must be performed by the manufacturer, their authorized representative, or qualified technicians.
- * Only use accessories/ components specified by the manufacturer.

For safety reasons, never use the pedal set barefoot or with only socks on your feet. PXN® is not responsible for injuries caused by using the pedals without shoes.

The product can only be operated by users aged 16 or above.

⚠ WARNING — Pedal Clamping Hazard While Playing Games

- * Keep the pedal set out of the reach of children.
- * Never place your fingers on or anywhere near the sides of the pedals during play.
- * Never place your fingers on or anywhere near the rear base of the pedals during play.
- * Never place your fingers on or anywhere near the front base of the pedals during play.



NEVER



NEVER



NEVER

⚠ Automatic Pedal Calibration

The pedals are automatically calibrated by pressing the pedal to its maximum travel after a successful connection.

⚠ Heavy Product !

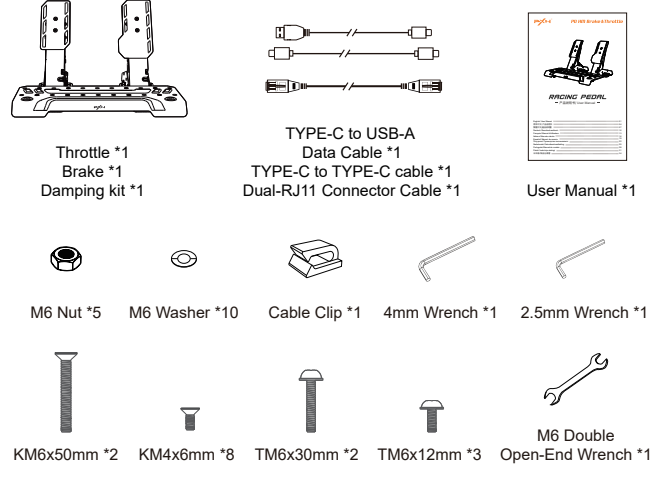
Be careful not to drop the product on yourself or on anyone else!

01 - English

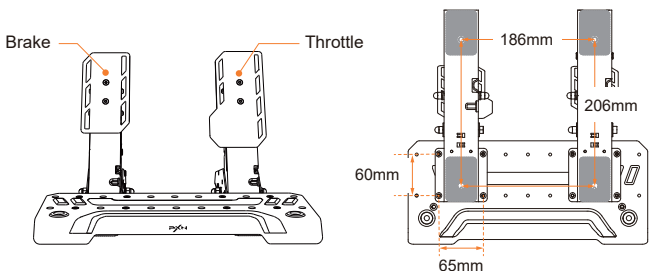
01 Supported Platforms

Supported platforms: PXN base, PC
PC System Requirement: Windows 7/ 8/ 10/ 11

02 Product Contents



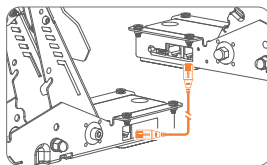
03 Product Overview



02 - English

04 Installation

- Step 1 Remove all pedals from the package.
- Step 2 Connect the throttle to the brake using the dual-RJ11 connector cable.
- Step 3 Plug in the data cable to the PXN base or PC, then secure the pedals to the mounting bracket for operation.



05 PC Software Configuration

Advanced Configuration via PC Software
Download [PXN SimRacing]:
<https://www.e-pxn.com/news>

- Main functions:
- Pedal curve adjustment
 - Pedal function reset



Scan the QR code to view more

06 Product Specifications

Model	PD HM Brake&Throttle
Connection Method	Wired Connection
Package Dimensions	About 432 * 373 * 122 mm
Product Dimensions	About 350 * 342 * 224 mm
Product Weight	About 2943 g
Operating Temperature	10-40°C
Operating Humidity	20~80%

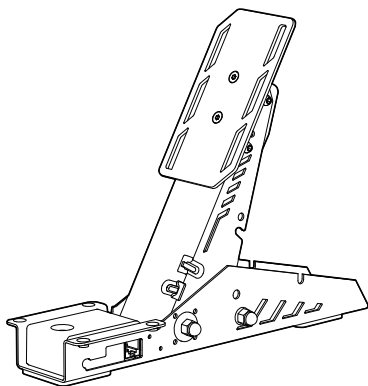
⚠ Warning

- Please read this user manual carefully before operation.
- Avoid strong vibration and dropping from heights.
- Do not disassemble, modify, or repair on your own.
- Prevent water or other liquids from entering the product to avoid damage.
- Avoid storing in damp, high-temperature, or oily environments.
- Use appropriate force when connecting and removing devices.
- Children should use this product under adult supervision.

03 - English



PD HM Clutch



CLUTCH PEDAL

– User Manual –

EN

Thank you for choosing and supporting PXN. Please read this manual carefully before starting to enjoy your gaming experience.

⚠ WARNING — Safety

- * When connecting, installing, and removing this product, apply appropriate force. Do not twist or pull the connectors.
- * Avoid splashing any liquids onto the product or its ports.
- * Do not disassemble, modify, or attempt repairs on your own. Any maintenance must be performed by the manufacturer, their authorized representative, or qualified technicians.
- * Only use accessories/ components specified by the manufacturer.

For safety reasons, never use the pedal set barefoot or with only socks on your feet. PXN® is not responsible for injuries caused by using the pedals without shoes.

The product can only be operated by users aged 16 or above.

⚠ WARNING — Pedal Clamping Hazard While Playing Games

- * Keep the pedal set out of the reach of children.
- * Never place your fingers on or anywhere near the sides of the pedals during play.
- * Never place your fingers on or anywhere near the rear base of the pedals during play.
- * Never place your fingers on or anywhere near the front base of the pedals during play.



NEVER



NEVER



NEVER

⚠ Automatic Pedal Calibration

The pedals are automatically calibrated by pressing the pedal to its maximum travel after a successful connection.

⚠ WARNING

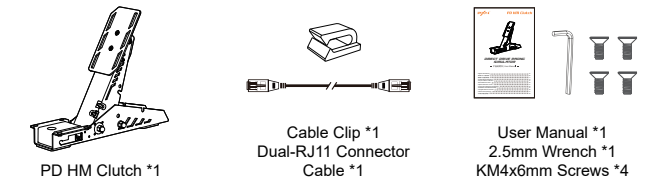
Do not press the pedals during the steering wheel's auto-calibration or game loading process.

01 - English

01 Compatible Device

For: PD HM Brake&Throttle

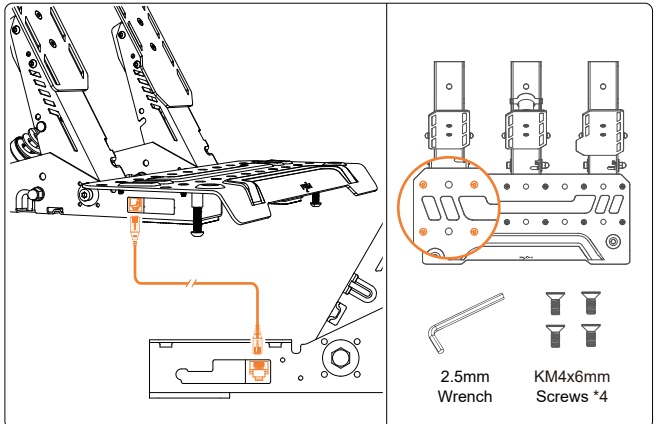
02 Product Contents



03 Installation Method

• Pedal Assembly

- Step 1 Remove the PD HM clutch pedal and PD HM Brake&Throttle from the package.
- Step 2 Connect the clutch pedal to the brake pedal using the dual-RJ11 connector cable.
- Step 3 Secure the pedal to the footplate using the KM4*6mm screws and wrench included in the accessory pack.



02 - English

04 Product Specifications

Model	PD HM Clutch
Connection Method	Wired Connection
Package Dimensions	About 338 * 268 * 125 mm
Product Dimensions	About 69 * 280 * 224 mm
Product Weight	About 950 g
Operating Temperature	10-40°C
Operating Humidity	20~80%

⚠ Warning

- Please read this user manual carefully before operation.
- Avoid strong vibration and dropping from heights.
- Do not disassemble, modify, or repair on your own.
- Prevent water or other liquids from entering the product to avoid damage.
- Avoid storing in damp, high-temperature, or oily environments.
- Use appropriate force when connecting and removing devices.
- Children should use this product under adult supervision.

03 - English